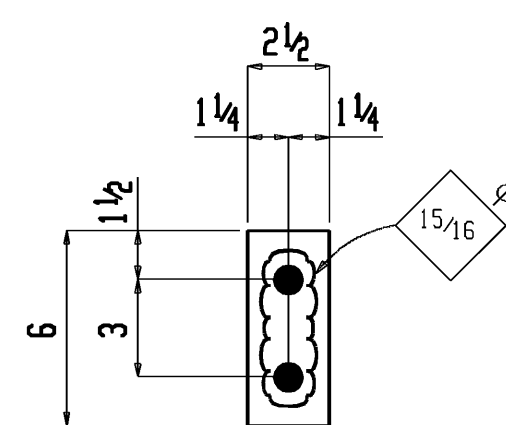
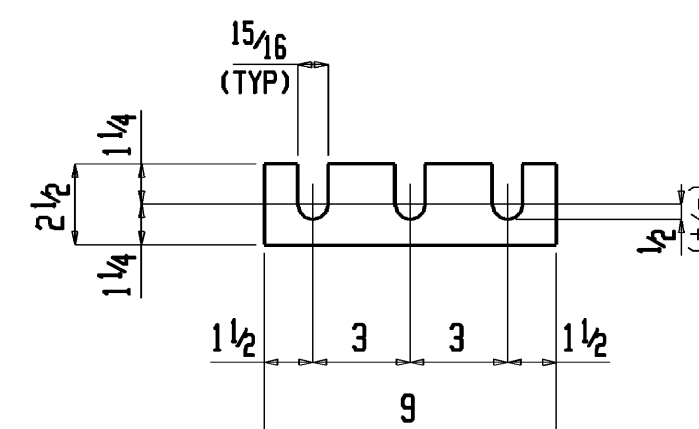


W	$9\frac{3}{4} \times 5\frac{1}{16}$
F	$7\frac{15}{16} \times 7\frac{7}{16}$
K	$1\frac{1}{8} \times 1\frac{13}{16}$



4 PLATES 3P1




2 PLATES 3P2

SHOP NOTES:
1)  INDICATES SPOT OF PAINT

SHOP BILL OF MATERIAL									Total weight : 188
SEQ NO	SEQ QUAN	MARK	QUAN	ITEM	LENGTH	WEIGHT	GRADE	REMARKS	PR
I	1	3C1	ONE	COLUMN		185			
		3C1	1	M10x33	3	3¼	107	A992	S2E
		c p2	1	PL¾x8	0	9¼	17	A36	
		p57	1	PL1x8	0	9	20	A36	
		p41	2	PL¾x3¾	0	8¾	6	A36	
		p61	2	PL½x4¾	0	5½	7	A36	
		p157	1	FL¾x4½	1	0	6	A36	
		a44	1	PL¾x8	0	9	8	A36	
		a44	1	L5x5x½	0	6	8	A36	
		a52	1	L3½x1¾x¾	0	3	1	A36	
		a64	1	L3x3x¾	0	6	4	A36	
			2	TC ¾ Dia F1852	0	2½	1	1HD, 2 WASH	
				FIELD BOLTS					
			4	TC ¾ Dia F1852	0	3¼		1HD WASH	
			4	TC ¾ Dia F1852	0	2¼		1HD WASH	
			2	TC ¾ Dia F1852	0	2		1HD WASH	
I	4	3P1	4	PLATE		2			
		3P1	4	PL¾x2½	0	6	2	A36	
I	2	3P2	2	PLATE		1			
		3P2	2	PL¾x2½	0	9	1	A36	

REF.DWG.=SEE B.O.M.

SURFACE PREPARATION: NONE SHOP PAINT: NONE	OPEN HOLES	13/16" Ø U/N						AMERICAN INSTITUTE OF STEEL CONSTRUCTION		 DOUGLAS STEEL FABRICATING CORPORATION rsteffens
								PROJECT: STRUCTURAL STEEL TEACHING SCULPTURE		
	ALL MAT'L	A36 U/N						CUSTOMER: AMERICAN INSTITUTE OF STEEL CONSTRUCTION		
								DRAWN RAS 07/2010 SHOP ORDER XXXX		
	WELD = E70XX ELECTRODE		NO.	REVISION	CODE	BY	DATE	CHECKED	CT	SHEET NO. 3